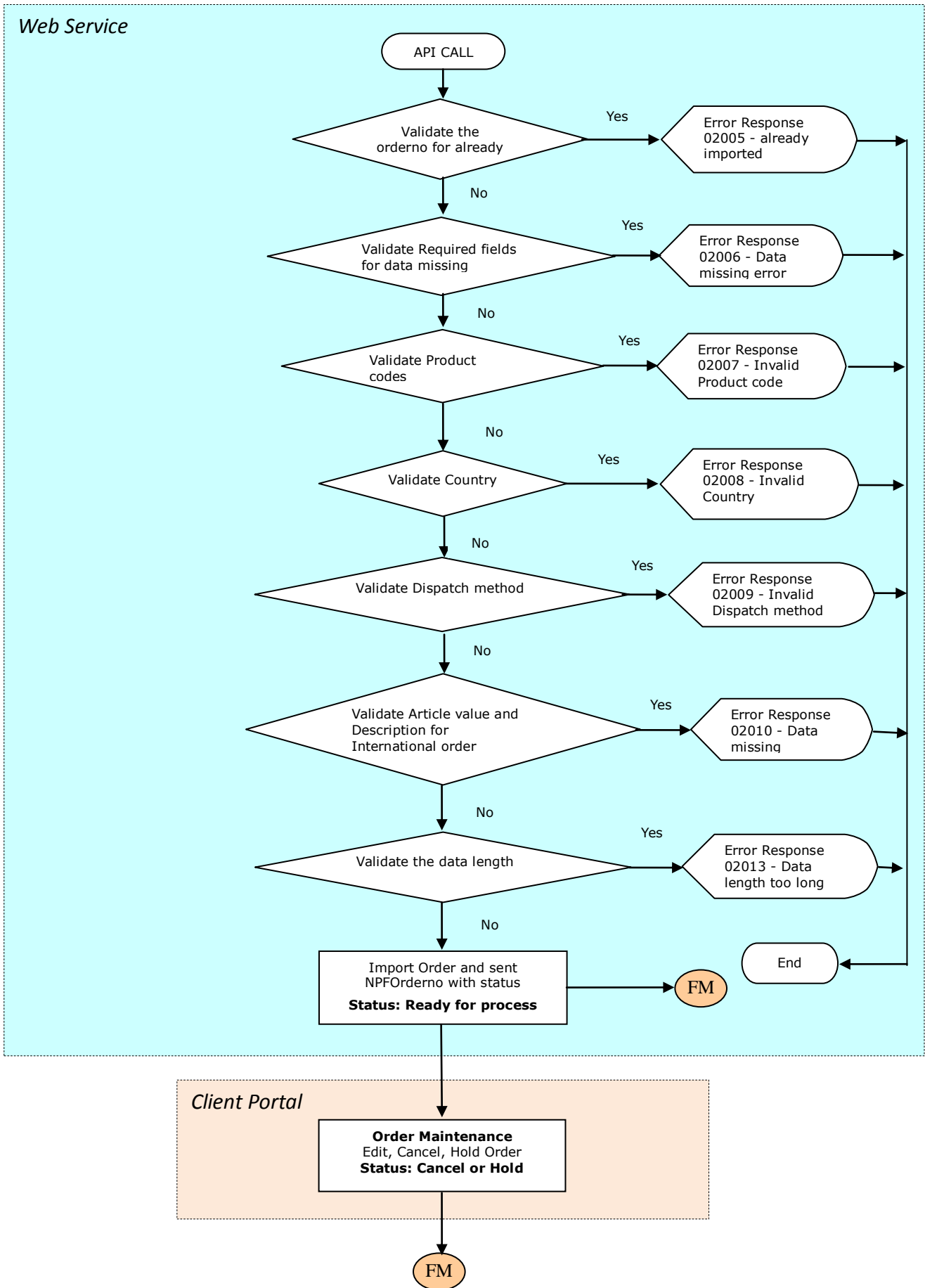
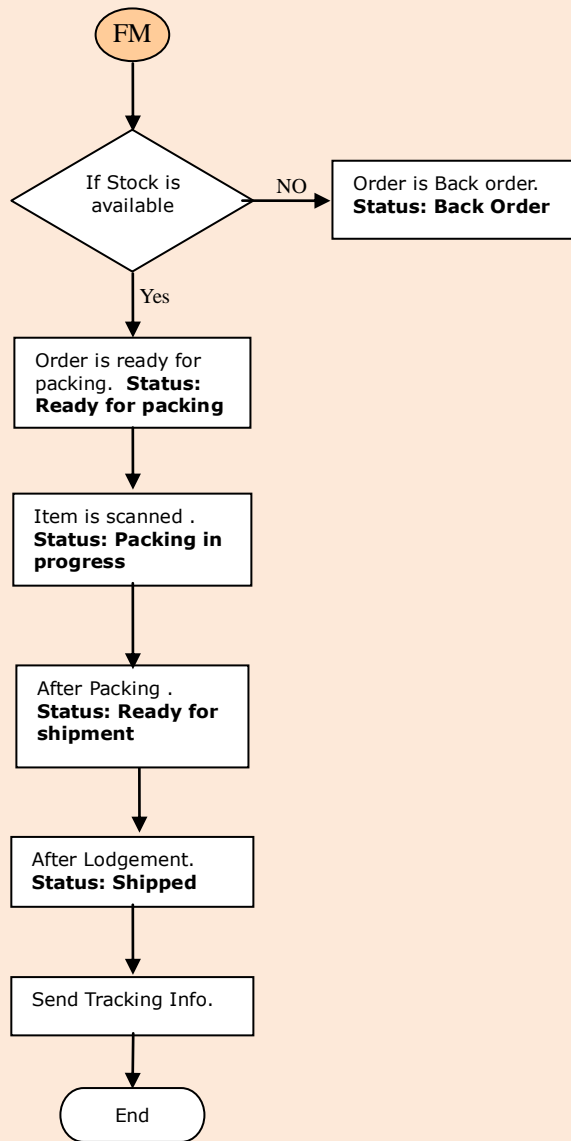
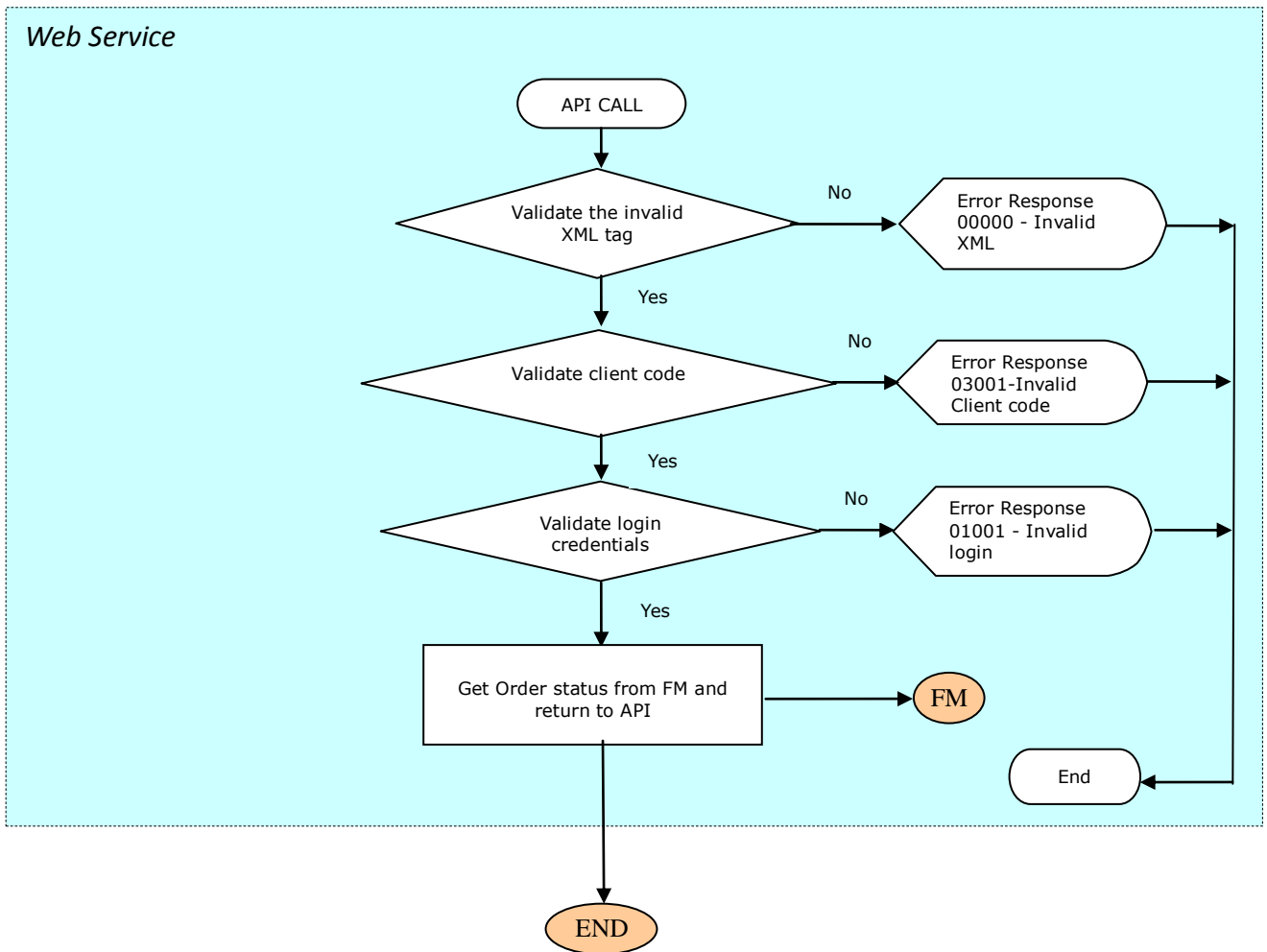


API IMPORT PROCESS

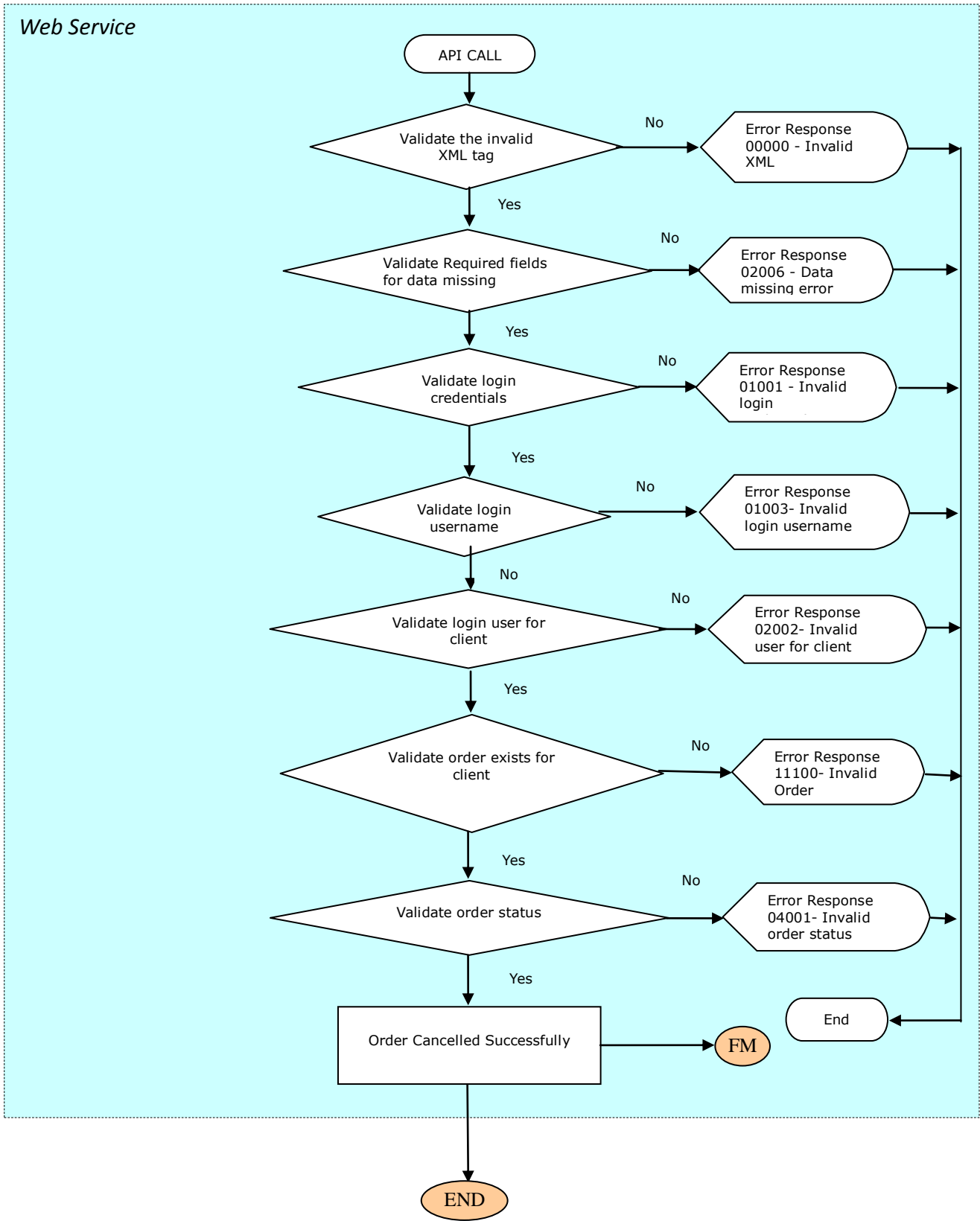




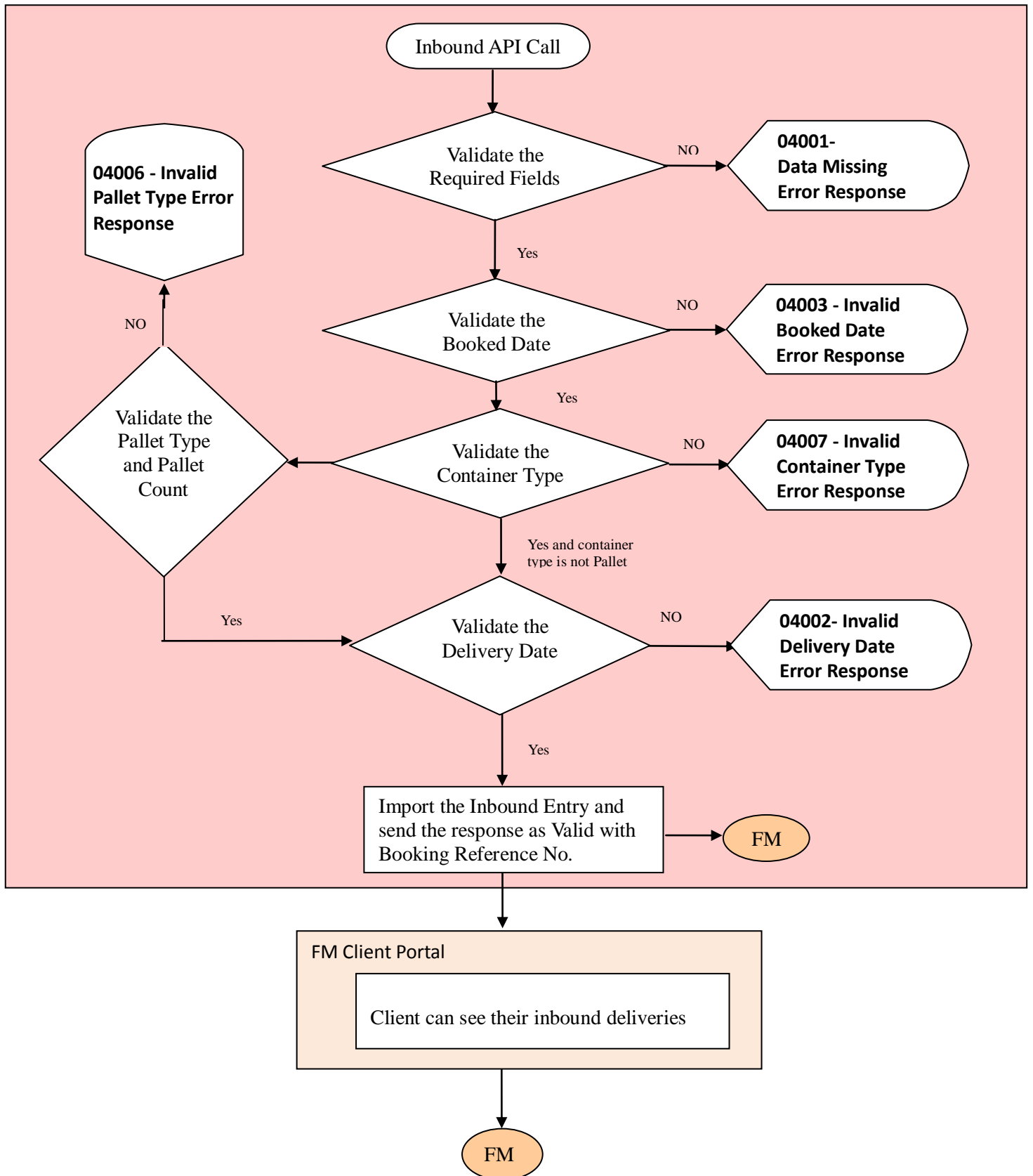
Order Tracking API PROCESS

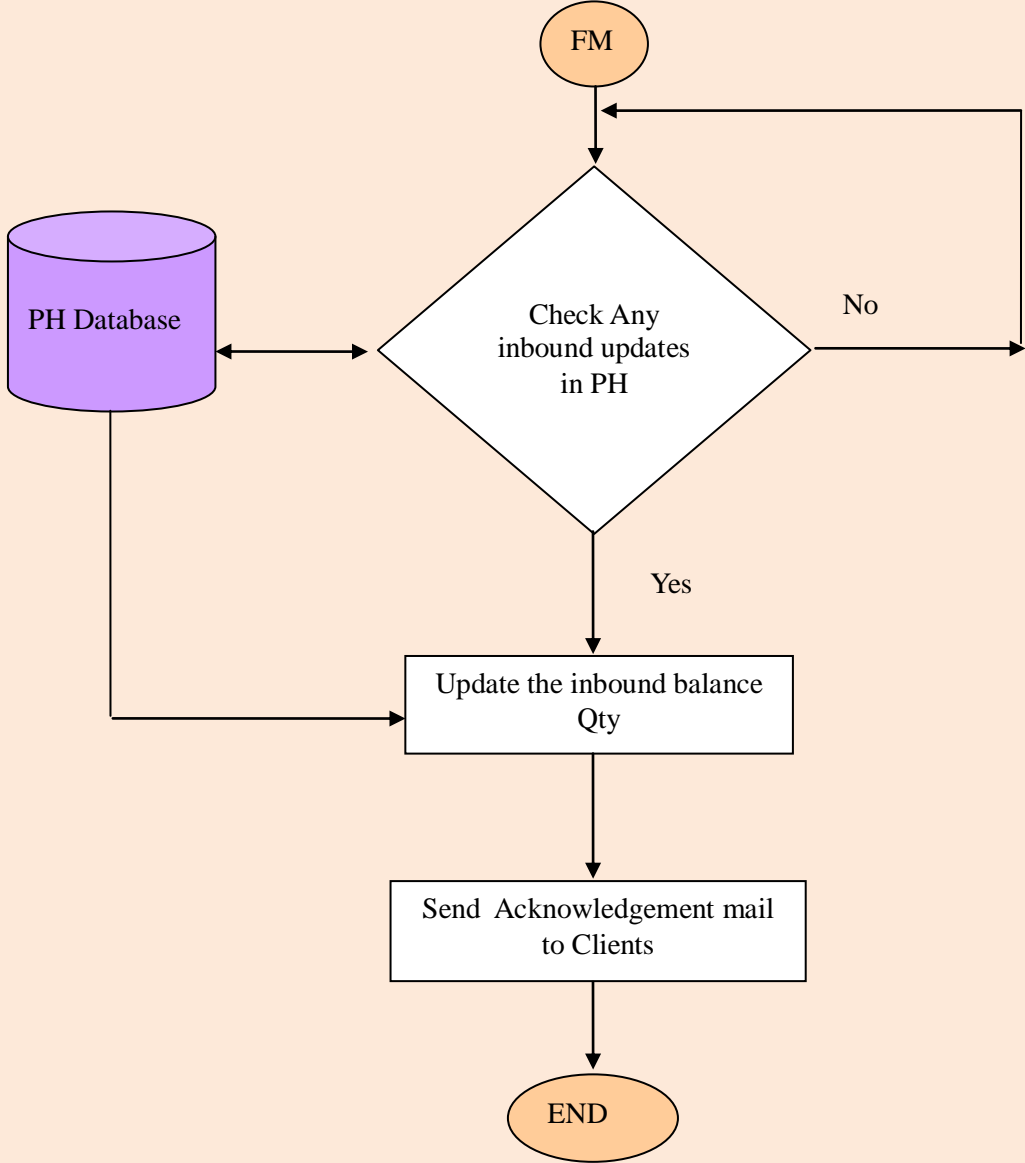


Order Cancel API PROCESS



API Inbound Flow





Old Version No.: 1.8

New Version No.: 2.0

Updated Date: 22-Apr-2019

What is new: Included Order Tracking and Order Cancel API Process flow diagrams

Updated by: Ramkumar

Requested by: Jey K